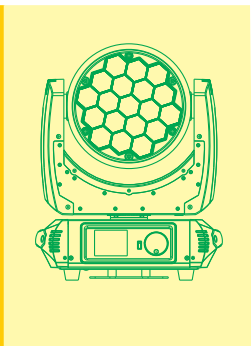
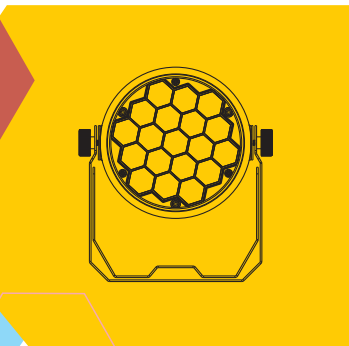
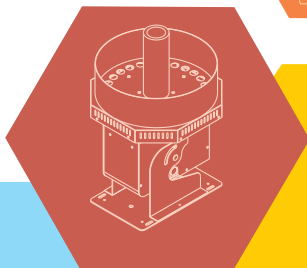
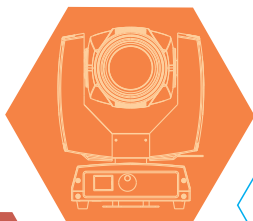




PRODUCT CATALOGUE 2018





COMPANY PROFILE

Stan Lightings is one of the leading distributors for Professional Lightings & Audio Equipments in INDIA for the last 15 Years gaining reputed Brand name for **Stan** Lightings which is highly appreciable from large range of customers, our lightings are mainly used in Nightclubs, Discos, Mobile Entertainment, Djs, Stage Concerts, Bands, TV Shows, Trade Shows, Architectural, etc.

We have large range of Moving Heads, Beam Moving Heads, LED Lights, Foggers, Scanners, Follow Spots, Outdoor Lightings, Effect Machines, Hazzers, Controllers, Dimmers, Power Amplifiers, Crossovers, Live Mixers, DJ Mixers, Speakers, Speaker Boxes, Line Arrays, etc.

With a High experience in the industry we know the quality control very well as there are other of our products like TUV, CE, CEE, ROHS, compiled and pass through regious tests.

All of our lightings comes with 3 Months warranty, send the bad part and we will replace it with new free of cost.

As a highly appreciable **Stan** Brand many other competitor make fake of our brand, so please buy **Stan** from our appointed distributors to get the warranty or call us for help.

Stan DJ Lightings offers wide range of spare parts at reasonable price.

Website : www.stanlightings.in

INDEX



ITEMS	PAGES
Sharpy	01.....12
LED Par Can	13.....19
Wall Washer	20.....20
LED Wash / Cob	21.....21
Moving Light	22.....24
Moving Effect	25.....27
Smoke Machine	28.....30
Snow Machine	31.....31
Haze Machine	32.....32
Low Fog Machine	33.....33
Effect Machine	34.....34
Co2 Machine	35.....37
Bubble Machine	38.....38
Fire Effect	39.....39
Pyro Controller	40.....41
Laser Effects	42.....46
Controller	47.....54
Power Distributor	55.....56
Follow Spot	57.....57
Heavy Duty Stand	58.....58
Truss	59.....59
Focus Light	60.....60
Spare Parts	61.....61
Note Pad	62.....62

SHARPY

SUPER BEAM 20-R 3-in-1



NEW

A
AUTO

DMX
512

SOLID
BEAM

LAMP
440W

Tilt-270
Pan-540

POWERED BY

OSRAM
LAMP
SIRIUS-440W

- Voltage : 110V~240V/50-60Hz
- Ballast : Electronic ballast
- Lamp : OSRAM SIRIUS HRI-440W
- Colour Wheel : 11 Color Colours + white
- Gobo Wheel : fixed gobo + white
- Rotation gobo : 9 gobo + white changeable
- Prism : 8 facet prism + 4 Linear prism + 16 facet prism
each 2 prism can mixed together for using frost function
- Wash Effect : Adjustable Wash Effects Angle
- Focus : Linear adjustment
- Dimmer : 0-100% Linear Adjustment
- Pan / Tilt : X Axis 540°, Y Axis 270° Automatically Accurate
- Beam Angle : Parallel Beam Angel 2.5° - 39°
- Control Mode : Standard DMX512, Automatic and Master / Slave Mode
- Weight : 22kg.



SHARPY

SUPER BEAM 20-R



NEW



POWERED BY

OSRAM
LAMP
SIRIUS-440W

- Voltage : 110V~240V/50-60Hz
Ballast : Electronic ballast
Lamp : OSRAM SIRIUS HRI-440W
Colour Wheel : 1 Color Wheel, 13 Colours
Gobo Wheel : 1 Gobo Wheels, Fixed Gobo Wheel have 17 gobos
+ white Rotation gobo changeable, 9 gobos + white
Prism 1 : 3 prism one is 8 facet, one is linear prism, and one is
16 facet prism
Wash Effect : Adjustable Wash Effects Angle
Focus : Linear adjustment
Dimmer : 0-100% Linear Adjustment
Pan / Tilt : X Axis 540°, Y Axis 270° Automatically Accurate
Beam Angle : Parallel Beam Angel 2.8°
Control Mode : Standard DMX512, Automatic and Master / Slave Mode
Weight : 22kg.



SHARPY

NEXUS BEAM 17R



11
PRISM

DMX
512

3 PHASE
MOTOR

LAMP
350W

Tilt-270
Pan-540



- Voltage : 110V~240V/50-60Hz
Ballast : Electronic ballast
Lamp : YODN 350W S17 ,Color temperature : 8500K
Life Span : 2000H
Colour Wheel : 14 Color + Blank Color Wheel
Gobo Wheel : 14 Fixed Gobo + Blank Gobo
Prism : Rotation 16-face prism + 6 Linear prism
32 prism+ linear prism, making many prism
Beam angle : 4 or 6 °
Lens : High Precision Optical Lens
Wash Effect : Adjustable Wash Effects Angle
Focus : Linear adjustment
Dimmer : 0-100% Linear Adjustment
Pan / Tilt : X Axis 540°,Y Axis 250° Automatically Accurate Positioning
Beam Angle : Parallel Beam Angel 0 - 6°
Strobe : Double lens strobe (0.5-9 times / second)
Control Mode : Standard DMX512, Automatic and Master / Slave Mode32
Channel : 16 / 19 Channels
Weight : 18.5kg.

POWERED BY
YODN
LAMP



SHARPY

POINTY 17R 3-in-1



- Voltage : 110V~240V/50-60Hz
Ballast : Electronic ballast
Lamp : YODN-350W
Colour Wheel : 13 Dichroic Filters + White
Gobo Wheel : Rotating Gobo Wheels, with Bi-directional and Indexable Gobos
Outside Dia. : 15.4mm, Image Diameter : 13mm
Static Gobo Wheel with 14 Fixed Gobos. at Variable Rotation
Prism 1 : 16-Facet Circulars Prism Rotating in both Directions at different Speeds
Prism 2 : 6-Facet Linear Prism Rotating in both directions at different Speeds
Zoom : Parallel Beam angle 2.5° to 20°Change
Lens : High Precision optical Lens
Wash Effect : Adjustable Wash Effects Angle
Focus : Linear adjustment
Dimmer : 0-100% Linear Adjustment
Pan / Tilt : X Axis 540°,Y Axis 270° Automatically Accurate
Beam Angle : Parallel Beam Angel 2.5 - 20°
Control Mode : Standard DMX512, Automatic and Master / Slave Mode
Weight : 19kg.

POWERED BY
YODN
LAMP



SHARPY

NEXUS BEAM 16R



NEW



- Voltage : 110V~240V/50-60Hz
Ballast : Electronic ballast
Lamp : JAPAN 300W R16 ,Color temperature : 8500K
Life Span : 2000H
Colour Wheel : 14 Color + Blank Color Wheel
Gobo Wheel : 17 Fixed Gobo + Blank Gobo
Prism : Rotation 16+18 face prism, Bilateral Rotation.
Lens : High Precision Optical Lens
Wash Effect : Adjustable Wash Effects Angle
Focus : Linear adjustment
Dimmer : 0-100% Linear Adjustment
Pan / Tilt : X Axis 540°,Y Axis 250° Automatically Accurate Positioning
Beam Angle : Parallel Beam Angel 0 - 3.8°
Strobe : Double lens strobe (0.5-9 times / second)
Control Mode : Standard DMX512, Automatic and Master / Slave Mode
Channel : 16 / 20 Channels
Weight : 18.5kg.

POWERED BY
JAPAN
LAMP



SHARPY

HYBRID BEAM SPOT 15R



NEW

- Voltage : 110V~240V/50-60Hz
- Ballast : Electronic ballast
- Lamp : JAPAN 300W R15 ,Color temperature : 8500K
- Life Span : 2000H
- Colour Wheel : 14 Color + Blank Color Wheel
- Gobo Wheel 1 : 17 Fixed Gobo + Blank Gobo
- Gobo Wheel 2 : 7 Rotating Changeable Gobo Wheel
- Prism : Rotation 8 face prism + Honeycomb Prism Bilateral Rotation.
- Lens : High Precision Optical Lens
- Wash Effect : Adjustable Wash Effects Angle
- Focus : Linear adjustment
- Dimmer : 0-100% Linear Adjustment
- Pan / Tilt : X Axis 540°,Y Axis 250° Automatically Accurate Positioning
- Beam Angle : Parallel Beam Angel 0 - 3.8°
- Strobe : Double lens strobe (0.5-9 times / second)
- Control Mode : Standard DMX512, Automatic and Master / Slave Mode
- Channel : 16 / 20 Channels
- Weight : 18.5kg.



POWERED BY

JAPAN

LAMP



SHARPY

NEXUS BEAM 15R



11
PRISM

DMX
512

3 PHASE
MOTOR

LAMP
300W

Tilt-270
Pan-540



- Voltage : 110V~240V/50-60Hz
Ballast : Electronic ballast
Lamp : JAPAN 300W R15 ,Color temperature : 8500K
Life Span : 2000H
Colour Wheel : 14 Color + Blank Color Wheel
Gobo Wheel : 14 Fixed Gobo + Blank Gobo
Prism : Rotation 16-face prism + 6 Linear prism
32 prism+ linear prism, making many prism
Lens : High Precision Optical Lens
Wash Effect : Adjustable Wash Effects Angle
Focus : Linear adjustment
Dimmer : 0-100% Linear Adjustment
Pan / Tilt : X Axis 540°,Y Axis 250° Automatically Accurate Positioning
Beam Angle : Parallel Beam Angel 0 - 6°
Strobe : Double lens strobe (0.5-9 times / second)
Control Mode : Standard DMX512, Automatic and Master / Slave Mode32
Channel : 18 Channels
Weight : 20 kg.

POWERED BY

JAPAN

LAMP



SHARPY

NEXUS BEAM 12R



NEW



- Voltage : 110V~240V/50-60Hz
Ballast : Electronic ballast
Lamp : JAPAN 290W R12 ,Color temperature : 8500K
Life Span : 2000H
Colour Wheel : 14 Color + Blank Color Wheel
Gobo Wheel : 17 Fixed Gobo + Blank Gobo
Prism : Rotation 16+24 face prism, Bilateral Rotation.
Lens : High Precision Optical Lens
Wash Effect : Adjustable Wash Effects Angle
Focus : Linear adjustment
Dimmer : 0-100% Linear Adjustment
Pan / Tilt : X Axis 540°,Y Axis 250° Automatically Accurate Positioning
Beam Angle : Parallel Beam Angel 0 - 3.8°
Strobe : Double lens strobe (0.5-9 times / second)
Control Mode : Standard DMX512, Automatic and Master / Slave Mode
Channel : 18 Channels
Weight : 18.5kg.

POWERED BY
JAPAN
LAMP



SHARPY

BEAM 10R



- Voltage : 110V~240V/50-60Hz
Ballast : Electronic ballast
Lamp : YODN 280W R10 ,Color temperature : 8500K
Life Span : 2000H
Colour Wheel : 14 Color + Blank Color Wheel
Gobo Wheel : 17 Fixed Gobo + Blank Gobo
Prism : Rotation 16-face prism+6 linear, Bilateral Rotation.
Lens : High Precision Optical Lens
Wash Effect : Adjustable Wash Effects Angle
Focus : Linear adjustment
Dimmer : 0-100% Linear Adjustment
Pan / Tilt : X Axis 540°,Y Axis 250° Automatically Accurate Positioning
Beam Angle : Parallel Beam Angel 0 - 3.8°
Strobe : Double lens strobe (0.5-9 times / second)
Control Mode : Standard DMX512, Automatic and Master / Slave Mode
Channel : 16 / 20 Channels
Weight : 18.5kg.

POWERED BY
YODN
LAMP



SHARPY

BEAM 7R VER. 2



OSRAM
BLAST

POWERED BY

OSRAM
LAMP

Voltage	: 110V~240V/50-60Hz
Ballast	: Electronic ballast
Lamp	: OSRAM, 230W, R7, Color temperature : 8500K
Life Span	: 2000H
Colour Wheel	: 14 Color + Blank Color Wheel
Gobo Wheel	: 17 Fixed Gobo + Blank Gobo
Prism	: Rotation 24-face Honeycomb prism, Bilateral Rotation.
Lens	: High Precision Optical Lens
Wash Effect	: Adjustable Wash Effects Angle
Focus	: Linear adjustment
Dimmer	: 0-100% Linear Adjustment
Pan / Tilt	: X Axis 540°, Y Axis 250° Automatically Accurate Positioning
Beam Angle	: Parallel Beam Angel 0 - 3.8°
Strobe	: Double lens strobe (0.5-9 times / second)
Control Mode	: Standard DMX512, Automatic and Master / Slave Mode
Channel	: 16 / 20 Channels
Weight	: 18.5kg.



SHARPY

LED BEAM



- Voltage : 110V~240V/50-60Hz
Ballast : Electronic ballast
LED : 150W High Power White LED
Color temperature : 8000K
Life Span : 20,000H
Colour Wheel : 11 Color + Blank Color Wheel
Gobo Wheel : 17 Fixed Gobo + Blank Gobo
Prism : Rotation 8-face prism, Bilateral Rotation
Lens : High Precision Optical Lens
Wash Effect : Adjustable Wash Effects Angle
Focus : Linear adjustment
Dimmer : 0-100% Linear Adjustment
Pan / Tilt : X Axis 540°, Y Axis 250° Automatically Accurate Positioning
Beam Angle : Parallel Beam Angel 0 - 3.8°
Strobe : Double lens strobe (0.5-9 times / second)
Control Mode : Standard DMX512, Automatic and Master / Slave Mode
Channel : 13 Channels
Weight : 13kg.



SHARPY

BEAM 10R YELLOW



- Voltage : 110V~240V/50-60Hz
Ballast : Electronic ballast
Lamp : 280W / 10R
Color temperature : 8500K
Life Span : 2000H
Colour Wheel : 14 Color + Blank Color Wheel
Gobo Wheel : 17 Fixed Gobo + Blank Gobo
Prism : Rotation 8-face prism/16 Prism, Bilateral Rotation
Lens : High Precision Optical Lens
Wash Effect : Adjustable Wash Effects Angle
Focus : Linear adjustment
Dimmer : 0-100% Linear Adjustment
Pan / Tilt : X Axis 540°, Y Axis 250° Automatically Accurate Positioning
Beam Angle : Parallel Beam Angel 0 - 3.8°
Strobe : Double lens strobe (0.5-9 times / second)
Control Mode : Standard DMX512, Automatic and Master / Slave Mode
Channel : 16 / 20 Channels
Weight : 18.5kg.



POWERED BY

JAPAN

LAMP



12

LED PAR CAN



S-035M

3-in-1 LED

SPECIFICATIONS

R G B

Voltage	: 110V~240V/50-60Hz
Power	: 200W
LEDs	: 54 Pcs. 3W LED
Life Time	: Over 50 000 Hour
Dimmer	: 0 - 100 %
Strobe	: 1 - 20 Times / Seconds
Beam Angle	: 15°, 25°, 35°, 45°
DMX Channel	: 6 Channels



S-045

3-in-1 LED

SPECIFICATIONS

R G B

Voltage	: 110V~240V/50-60Hz
Power	: 200W
LEDs	: 60 Pcs. 3W LED
Life Time	: Over 50 000 Hour
Dimmer	: 0 - 100 %
Strobe	: 1 - 20 Times / Seconds
Beam Angle	: 15°, 25°, 35°, 45°
DMX Channel	: 6 Channels



S-044

SPECIFICATIONS

3W Warm White

Voltage	: 110V~240V/50-60Hz
Power	: 200W
LEDs	: 60 Pcs. 3W
Life Time	: Over 50 000 Hour
Dimmer	: 0 - 100 %
Strobe	: 1 - 20 Times / Seconds
Beam Angle	: 15°, 25°, 35°, 45°
DMX Channel	: 4 Channels



LED PAR CAN



S-047

4-in-1 LED

SPECIFICATIONS

R G B W

Voltage	: 110V~240V/50-60Hz
Power	: 200W
LEDs	: 54 Pcs. 4W 4in1 LED
Life Time	: Over 50 000 Hour
Dimmer	: 0 - 100 %
Strobe	: 1 - 20 Times / Seconds
Beam Angle	: 15°, 25°, 35°, 45°
DMX Channel	: 7 Channels



S-033

3-in-1 LED

SPECIFICATIONS

R G B

Voltage	: 110V~240V/50-60Hz
Power	: 200W
LEDs	: 60 Pcs. 3W 3 in 1 LED
Life Time	: Over 50 000 Hour
Dimmer	: 0 - 100 %
Strobe	: 1 - 20 Times / Seconds
Beam Angle	: 15°, 25°, 35°, 45°
DMX Channel	: 6 Channels



SE-033

3-in-1 LED

SPECIFICATIONS

R G B

Voltage	: 110V~240V/50-60Hz
Power	: 200W
LEDs	: 60 Pcs. 3W 3in1 LED
Life Time	: Over 50 000 Hour
Dimmer	: 0 - 100 %
Strobe	: 1 - 20 Times / Seconds
Beam Angle	: 15°, 25°, 35°, 45°
DMX Channel	: 6 Channels



LED PAR CAN



SP-01

3-in-1 LED

SPECIFICATIONS

R G B

Voltage	: 110V~240V/50-60Hz
Power	: 200W
LEDs	: 54 Pcs. 3W 3in1 LED
Life Time	: Over 50 000 Hour
Dimmer	: 0 - 100 %
Strobe	: 1 - 20 Times / Seconds
Beam Angle	: 15°, 25°, 35°, 45°
DMX Channel	: 7 Channels



SE-03

3-in-1 LED

SPECIFICATIONS

R G B

Voltage	: 110V~240V/50-60Hz
Power	: 180W
LEDs	: 54 Pcs. 3W 3 in 1 LED
Life Time	: Over 50 000 Hour
Dimmer	: 0 - 100 %
Strobe	: 1 - 20 Times / Seconds
Beam Angle	: 15°, 25°, 35°, 45°
DMX Channel	: 7 Channels



SE-02

3-in-1 LED

SPECIFICATIONS

R G B

Voltage	: 110V~240V/50-60Hz
Power	: 150W
LEDs	: 54 Pcs. 2W LED
Life Time	: Over 50 000 Hour
Dimmer	: 0 - 100 %
Strobe	: 1 - 20 Times / Seconds
Beam Angle	: 15°, 25°, 35°, 45°
DMX Channel	: 7 Channels



LED PAR CAN



LP-001

SPECIFICATIONS

R G B W

Voltage	: 110V~240V/50-60Hz
Power	: 200W
LEDs	: 54 Pcs. 3W LED
Life Time	: Over 50 000 Hour
Dimmer	: 0 - 100 %
Strobe	: 1 - 20 Times / Seconds
Beam Angle	: 15°, 25°, 35°, 45°
DMX Channel	: 8 Channels



LPC-007

3-in-1 LED

SPECIFICATIONS

R G B

Voltage	: 110V~240V/50-60Hz
Power	: 200W
LEDs	: 54 Pcs. 3W LED
Life Time	: Over 50 000 Hour
Dimmer	: 0 - 100 %
Strobe	: 1 - 20 Times / Seconds
Beam Angle	: 15°, 25°, 35°, 45°
DMX Channel	: 7 Channels



S-052

3-in-1 LED

SPECIFICATIONS

R G B

Voltage	: 110V~240V/50-60Hz
Power	: 150W
LEDs	: 60 Pcs. 2W 3 in 1 LED
Life Time	: Over 50 000 Hour
Dimmer	: 0 - 100 %
Strobe	: 1 - 20 Times / Seconds
Beam Angle	: 15°, 25°, 35°, 45°
DMX Channel	: 6 Channels



LED PAR CAN



S-041

4-in-1 LED

SPECIFICATIONS

R G B W

Voltage	: 110V~240V/50-60Hz
Power	: 200W
LEDs	: 54 Pcs. 3W LED
Life Time	: Over 50 000 Hour
Dimmer	: 0 - 100 %
Strobe	: 1 - 20 Times / Seconds
Beam Angle	: 15°, 25°, 35°, 45°
DMX Channel	: 8 Channels



S-051

SPECIFICATIONS

R G B W

Voltage	: 110V~240V/50-60Hz
Power	: 200W
LEDs	: 18 Pcs. 10W LED
Life Time	: Over 50 000 Hour
Dimmer	: 0 - 100 %
Strobe	: 1 - 20 Times / Seconds
Beam Angle	: 15°, 25°, 35°, 45°
DMX Channel	: 8 Channels



S-046

3-in-1 LED

SPECIFICATIONS

R G B

Voltage	: 110V~240V/50-60Hz
Power	: 100W
LEDs	: 54 Pcs. 1W 3 in 1LED
Life Time	: Over 50 000 Hour
Dimmer	: 0 - 100 %
Strobe	: 1 - 20 Times / Seconds
Beam Angle	: 15°, 25°, 35°, 45°
DMX Channel	: 6 Channels



LED PAR CAN



S-253

ZOOM PAR

SPECIFICATIONS

R G B W

Voltage	: 110V~240V/50-60Hz
Power	: 300W
LEDs	: 19 Pcs. 15W LED
Life Time	: Over 50 000 Hour
Dimmer	: 0 - 100 %
Strobe	: 1 - 20 Times / Seconds
Beam Angle	: 8°-38°
DMX Channel	: 9 Channels



S-251

B EYE PAR

SPECIFICATIONS

R G B

Voltage	: 110V~240V/50-60Hz
Power	: 50W
LEDs	: 6 Pcs. 3W LED
Life Time	: Over 50 000 Hour
Dimmer	: 0 - 100 %
Strobe	: 1 - 20 Times / Seconds
DMX Channel	: 8/5 Channels



S-250

COB PAR

SPECIFICATIONS

R G B

Voltage	: 110V~240V/50-60Hz
Power	: 80W
LEDs	: 1 Pcs. 60W LED 3 in 1
Life Time	: Over 50 000 Hour
Dimmer	: 0 - 100 %
Strobe	: 1 - 20 Times / Seconds
DMX Channel	: 8 Channels



LED PAR CAN



S-084 Metal

3-in-1 LED

SPECIFICATIONS

R G B

Voltage	: 110V~240V/50-60Hz
Power	: 300W
LEDs	: 84 Pcs. 3W LED
Life Time	: Over 50 000 Hour
Dimmer	: 0 - 100 %
Strobe	: 1 - 20 Times / Seconds
Beam Angle	: 15°, 25°, 35°, 45°
DMX Channel	: 8 Channels



S-84 PLASTIC

3-in-1 LED

SPECIFICATIONS

R G B

Voltage	: 110V~240V/50-60Hz
Power	: 250W
LEDs	: 84 Pcs. 3W LED
Life Time	: Over 50 000 Hour
Dimmer	: 0 - 100 %
Strobe	: 1 - 20 Times / Seconds
Beam Angle	: 15°, 25°, 35°, 45°
DMX Channel	: 6 Channels



S-041B

SPECIFICATIONS

R G B W

Voltage	: 110V~240V/50-60Hz
Power	: 200W
LEDs	: 54 Pcs. 3W
Life Time	: Over 50 000 Hour
Dimmer	: 0 - 100 %
Strobe	: 1 - 20 Times / Seconds
Beam Angle	: 15°, 25°, 35°, 45°
DMX Channel	: 6 Channels



WALL WASHER



S 215

3-in-1

SPECIFICATIONS



Voltage	: 110V~240V/50-60Hz
Power	: 200W
LEDs	: 72 Pcs. 3-in-1
Life Time	: Over 50 000 Hour
Dimmer	: 0 - 100 %
Strobe	: 1 - 20 Times / Seconds
Beam Angle	: 15°, 25°, 35°, 45°
DMX Channel	: 8 Channels



S-216

3-in-1

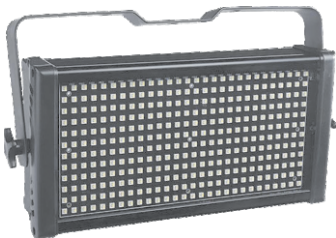
SPECIFICATIONS



Voltage	: 110V~240V/50-60Hz
Power	: 200W
LEDs	: 36 Pcs. 3W LED
Life Time	: Over 50 000 Hour
Dimmer	: 0 - 100 %
Strobe	: 1 - 20 Times / Seconds
Beam Angle	: 15°, 25°, 35°, 45°
DMX Channel	: 8 Channels



LED WASH/COB



S-212

4-in-1

SPECIFICATIONS

R G B W

- Voltage : 110V~240V/50-60Hz
- Power : 100W
- LEDs : 312 Pcs. 0.4W (5630) LED
- Life Time : Over 50 000 Hour
- Temp. : 6000 - 8000K
- Dimmer : 0 - 100 %
- DMX Channel : 3 Channels (Speed/Dimming)
- Weight : 2.6kg.



S-213

4-in-1

SPECIFICATIONS

R G B W

- Voltage : 110V~240V/50-60Hz
- Power : 200W
- LEDs : 120 Pcs. 10W LED 4-in-1
- Life Time : Over 50 000 Hour
- Dimmer : 0 - 100 %
- Strobe : 1 - 20 Times / Seconds
- Beam Angle : 15°, 25°, 35°, 45°
- DMX Channel : 8 Channels



S-214

WARM WHITE

SPECIFICATIONS

COB

- Voltage : 110V~240V/50-60Hz
- Power : 200W
- LEDs : 4 Pcs. 100W COB
- Life Time : Over 50 000 Hour
- Dimmer : 0 - 100 %
- Strobe : 1 - 20 Times / Seconds
- Beam Angle : 35°
- DMX Channel : 8 Channels



MOVING LIGHT



OSRAM LED

S-151

4-in-1

SPECIFICATIONS

R G B W

Voltage	: 110V~240V/50-60Hz
Power	: 300W
LEDs	: 19 Pcs. 15W RGBW LED
Zoom Angle	: 8°-38°
Effect	: Pixel Control
Dimmer	: 0-100% Linear Dimmer
Strobe	: 1 - 25 Times / Seconds
DMX Channel	: 14/25 Channels



OSRAM LED

S-152

4-in-1

SPECIFICATIONS

R G B W

Voltage	: 110V~240V/50-60Hz
Power	: 200W
LEDs	: 6 Pcs. 15W RGBW LED
Effect	: Create beam and flower, Vortex effect, Built in 60 Static, Multiple Built in Programs
Dimmer	: 0 - 100 % Linear Dimming System
Strobe	: 1 - 25 Times / Seconds
DMX Channel	: 15 Channels



MOVING LIGHT



S-155

CREE

SPECIFICATIONS

R G B W

Voltage	: 110V~240V/50-60Hz
Power	: 300W
LEDs	: 18Pcs. 15W RGBW LED
Zoom Angle	: 1.5°-90°
Effect	: Pixel Control
Dimmer	: 0-100% Linear Dimmer
Strobe	: 1 - 25 Times / Seconds
DMX Channel	: 20/38/90 Channels



S-156

CREE

SPECIFICATIONS

R G B W

Voltage	: 110V~240V/50-60Hz
Power	: 160 W
LEDs	: 12 Pcs. 10W RGBW LED
Effect	: RGBW Infinite color mixing, Multiple Built in Programs
Dimmer	: 0 - 100 % Linear Dimming System
Strobe	: 1 - 25 Times / Seconds
DMX Channel	: 16/18 Channels



MOVING LIGHT



S-203

OSRAM LED

4-in-1

SPECIFICATIONS

R G B W

Voltage	: 110V~240V/50-60Hz
Power	: 100W
LEDs	: 60W
Effects	: RGBW Color Mixing, LED Rainbow effect, Built-in programme.
Dimmer	: 0 - 100 % Linear Dimming System
Strobe	: 1 - 25 Times / Seconds
DMX Channel	: 13/17 Channels



S-208

CREE

4-in-1

SPECIFICATIONS

R G B W

Voltage	: 110V~240V/50-60Hz
Power	: 100W
LEDs	: 8 Pcs. 10W 4in1 LED
Effects	: RGBW Color Mixing, LED Rainbow effect, Built-in programme.
Dimmer	: 0 - 100 % Linear Dimming System
Strobe	: 1 - 25 Times / Seconds
DMX Channel	: 13/17 Channels



S-211

CREE

4-in-1

SPECIFICATIONS

R G B W

Voltage	: 110V~240V/50-60Hz
Power	: 100W
LEDs	: 8 Pcs. 10W 4in1 LED
Effects	: RGBW Color Mixing, LED Rainbow effect, Built-in programme.
Dimmer	: 0 - 100 % Linear Dimming System
Strobe	: 1 - 25 Times / Seconds
DMX Channel	: 13/17 Channels

MOVING EFFECT



S-171

4-in-1

SPECIFICATIONS

R G B W

CREE

- Voltage : 110V~240V/50-60Hz
Power : 80W
LEDs : 8 Pcs. 10W 4in1 LED
Effects : RGBW Color Mixing, LED Rainbow effect, Built-in programme.
Dimmer : 0 - 100 % Linear Dimming System
Strobe : 1 - 25 Times / Seconds
DMX Channel : 10/16 Channels



S-169

4-in-1

SPECIFICATIONS

R G B W

CREE

- Voltage : 110V~240V/50-60Hz
Power : 80 W
LEDs : 4 Pcs. 10W 4in1 LED
Effect : RGBW Infinite color mixing, Multiple Built in Programs
Dimmer : 0 - 100 % Linear Dimming System
Strobe : 1 - 25 Times / Seconds
DMX Channel : 21 Channels



MOVING EFFECT

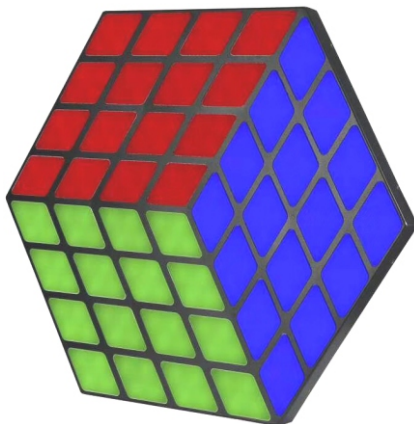


LED FAN

SPECIFICATIONS

Voltage	: 110V~240V/50-60Hz
Power	: 20W
LEDs	: RGB 0805 LED
Format	: MP4/AVI/RMVB/MKV/GIF/JPG/PNG
View Angle	: 150 Degree
Play Files	: Bin special Format

Support common video, animations and image display.
Editing software is suitable for window XP, Window 7/8/10.



LED CUBE

3-in-1

SPECIFICATIONS

R G B

Voltage	: 110V~240V/50-60Hz
Power	: 60 W
LEDs	: 192 Pcs. 0.5W SMD 5050 3-IN-1 LED
Effect	: 31 Inbuilt Auto Programs
Dimmer	: 0 - 255 % Linear Dimming System
Strobe	: 1 - 25 Times / Seconds
DMX Channel	: 5/8/41/144/149 Channels

MOVING EFFECT



S-177

CREE

SPECIFICATIONS

R G B W

Voltage	: 110V~240V/50-60Hz
Power	: 30W
LEDs	: 1 Pc. 15W White LED
Gobo Wheel	: 7 fixed Gobos + Spot
Color Wheel	: 7 Colors + White
Prism Wheel	: 3-Facet Prism
Focus	: Manual Focus
Dimmer	: 0 - 100 % Linear Dimming System
Strobe	: 1 - 25 Times / Seconds
DMX Channel	: 9/11 Channels



S-173

CREE

4-in-1

SPECIFICATIONS

R G B W

Voltage	: 110V~240V/50-60Hz
Power	: 80 W
LEDs	: 7 Pcs. 10W RGBW LED
Effect	: RGBW Infinite color mixing, Multiple Built in Programs
Dimmer	: 0 - 100 % Linear Dimming System
Strobe	: 1 - 25 Times / Seconds
DMX Channel	: 8/13 Channels



SMOKE MACHINE



Z-900

SPECIFICATIONS

Voltage : 110V~240V/50-60Hz
Power : 900W
Heat up Time : 5 Minutes
Smoke Output : 15000 cu.ft/Min.
Control Mode : Remote Control/
Wireless
Spray Distance : 9 Meters



Z-1200

SPECIFICATIONS

Voltage : 110V~240V/50-60Hz
Power : 1200W
Heat up Time : 5 Minutes
Smoke Output : 18000 cu.ft/Min.
Control Mode : Remote Control/
Wireless
Spray Distance : 12 Meters



Z-1500

SPECIFICATIONS

Voltage : 110V~240V/50-60Hz
Power : 1500W
Heat up Time : 8 Minutes
Smoke Output : 20000 cu.ft/Min.
Control Mode : Remote Control/
Wireless
Spray Distance : 15 Meters



SMOKE MACHINE



Z-2500

SPECIFICATIONS

Voltage : 110V~240V/50-60Hz
Power : 2500W
Heat up Time : 9 Minutes
Smoke Output : 22000 cu.ft./Min.
Control Mode : Remote Control/
Wireless
Spray Distance : 18 Meters



Z-3000

SPECIFICATIONS

Voltage : 110V~240V/50-60Hz
Power : 3000W
Heat up Time : 9 Minutes
Smoke Output : 25000 cu.ft./Min.
Control Mode : Remote Control/
Wireless
Spray Distance : 20 Meters



Z-1500-LED

SPECIFICATIONS

Voltage : 110V~240V/50-60Hz
Power : 1500W
Heat up Time : 8 Minutes
Smoke Output : 20000 cu.ft./Min.
Control Mode : Remote Control/
Wireless
Spray Distance : 15 Meters



SMOKE MACHINE



Z-2000

SPECIFICATIONS

Voltage : 110V~240V/50-60Hz
Power : 2000W
Heat up Time : 8 Minutes
Smoke Output : 20000 cu.ft./Min.
Control Mode : Remote Control/
Wireless
Spray Distance : 18 Meters



Z-2000 LED

SPECIFICATIONS

Voltage : 110V~240V/50-60Hz
Power : 2000W
Heat up Time : 9 Minutes
Smoke Output : 25000 cu.ft./Min.
Control Mode : Remote Control/
Wireless
Spray Distance : 20 Meters



Z-400

SPECIFICATIONS

Voltage : 110V~240V/50-60Hz
Power : 400W
Heat up Time : 5 Minutes
Smoke Output : 10000 cu.ft./Min.
Control Mode : Remote Control/
Wireless
Spray Distance : 5 Meters



SNOW MACHINE



SM-1500 MK2

SPECIFICATIONS

Voltage : 110V~240V/50-60Hz
Power : 1500W
Smoke Output : 8000 cu.ft/Min.
Control Mode : Remote Control/
Wireless
Spray Distance : 8 Meters



SM-1500

SPECIFICATIONS

Voltage : 110V~240V/50-60Hz
Power : 1500W
Smoke Output : 6000 cu.ft/Min.
Control Mode : Remote Control/
Wireless
Spray Distance : 8 Meters



SM-600

SPECIFICATIONS

Voltage : 110V~240V/50-60Hz
Power : 600W
Smoke Output : 4000 cu.ft/Min.
Control Mode : Remote Control/
Wireless
Spray Distance : 5 Meters



HAZE MACHINE



HZ-2500

SPECIFICATIONS

Voltage : 110V~240V/50-60Hz
Power : 2500W
Heat up Time : 3 Minutes
Smoke Output : 3500 cu.ft/Min.
Control Mode : Remote Control/
Wireless
Spray Distance : 5 Meters



HZ-1500

SPECIFICATIONS

Voltage : 110V~240V/50-60Hz
Power : 1500W
Heat up Time : 3 Minutes
Smoke Output : 3000 cu.ft/Min.
Control Mode : Remote Control/
Wireless
Spray Distance : 5 Meters



HZ-1000

SPECIFICATIONS

Voltage : 110V~240V/50-60Hz
Power : 1000W
Heat up Time : 3 Minutes
Smoke Output : 2000 cu.ft/Min.
Control Mode : Remote Control/
Wireless
Spray Distance : 4 Meters



LOW FOG MACHINE



DRY ICE S-210

SPECIFICATIONS

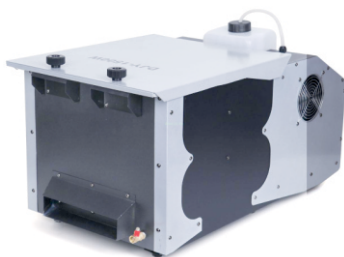
Voltage : 110V~240V/50-60Hz
Power : 6000W
Heat up Time : 10 Minutes
Smoke Output : 60000 cu.ft/Min.
Control Mode : Remote Control/
Wireless
Spray Distance : 50 Meters



LF-3000

SPECIFICATIONS

Voltage : 110V~240V/50-60Hz
Power : 3000W
Heat up Time : 8 Minutes
Smoke Output : 40000 cu.ft/Min.
Control Mode : Remote Control/
Wireless
Spray Distance : 15 Meters



LF-1000

SPECIFICATIONS

Voltage : 110V~240V/50-60Hz
Power : 1000W
Heat up Time : 3 Minutes
Smoke Output : 30000 cu.ft/Min.
Control Mode : Remote Control/
Wireless
Spray Distance : 10 Meters



EFFECT MACHINE



WATER LOW FOG

SPECIFICATIONS

Voltage : 110V~240V/50-60Hz
Power : 6000W
Heat up Time : 10 Minutes
Smoke Output : 60000 cu.ft/Min.
Control Mode : Remote Control/
DMX-512
Spray Distance : 50 Meters



BIG RAINBOW CONFETTI

SPECIFICATIONS

Voltage : 110V~240V/50-60Hz
Power : 100W
Height : 20 Meters
Output : 150 Sqm
Control Mode : Remote Control/
DMX-512
Spray Distance : 20 Meters



CONFETTI GUN

SPECIFICATIONS

Voltage : 3 Pcs. 2200 Mah 12V
Power : 20W
Output : 10 Meters
Control Mode : Manual



Co2 MACHINE



CONFETTI

SPECIFICATIONS

Voltage : 110V~240V/50-60Hz
Power : 200W
Spray Height : 3 Meters
Output Time : 2-3 Seconds
Control Mode : Wireless/DMX



S-180

SPECIFICATIONS

Voltage : 110V~240V/50-60Hz
Power : 50W
Control Mode : DMX
Spray Distance : 6 Meters
Weight : 12 Kg.



S-303

SPECIFICATIONS

Voltage : 110V~240V/50-60Hz
Power : 1500W
Control Mode : Wired/Cordless
Spray Distance : 10 Meters
Weight : 34 Kg.



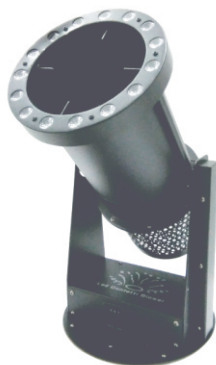
Co2 MACHINE



S-184 LED CONFETTI

SPECIFICATIONS

Voltage : 110V~240V/50-60Hz
Power : 100W
Spray Height : 9 Meters
Control Mode : DMX
Angle : 0°-180° Via DMX
Weight : 10 Kg.



S-181 LED

SPECIFICATIONS

Control Mode : By Hand
Spray Distance : 8 Meters
Weight : 4 Kg.



S-181

SPECIFICATIONS

Control Mode : By Hand
Spray Distance : 6 Meters
Weight : 3 Kg.



Co2 MACHINE



S-185

SPECIFICATIONS

Voltage	: 110V~240V/50-60Hz
Power	: 146W
LED	: 27 x 5W RGB 3-in-1
Heat up Time	: 5-7 Minutes
Co ² Output	: 15000 cu.ft/Min.
Control Mode	: Remote Control/ Wireless
Spray Distance	: 9 Meters



S-186

SPECIFICATIONS

Voltage	: 110V~240V/50-60Hz
Power	: 11W
Heat up Time	: 5 Minutes
Smoke Output	: 18000 cu.ft/Min.
Control Mode	: Remote Control/ Wireless
Spray Distance	: 12 Meters



S-187

SPECIFICATIONS

Voltage	: 110V~240V/50-60Hz
Power	: 71W
LED	: 12 x 5W RGB 3-in-1
Heat up Time	: 8 Minutes
Smoke Output	: 20000 cu.ft/Min.
Control Mode	: Remote Control/ Wireless
Spray Distance	: 15 Meters



BUBBLE MACHINE



SMOKE BUBBLE

SPECIFICATIONS

Voltage : 110V~240V/50-60Hz
Power : 1000W
Heat up Time : 5 Minutes
Smoke Output : 18000 cu.ft/Min.
Control Mode : Remote Control/
Wireless
Spray Distance : 8 Meters



BIG BUBBLE

SPECIFICATIONS

Voltage : 110V~240V/50-60Hz
Power : 100W
Control Mode : Remote Control/
Wireless
Spray Distance : 5 Meters



BUBBLE

SPECIFICATIONS

Voltage : 110V~240V/50-60Hz
Power : 60W
Control Mode : Remote Control/
Wireless
Spray Distance : 3 Meters



FIRE EFFECTS



S-200

SPECIFICATIONS

Voltage : 110V~240V/50-60Hz
Power : 200W
Control Mode : Wireless/DMX
Spray Distance : 3 Meters
Weight : 3 Kg.

CORD
LESS

DMX
512



S-201

SPECIFICATIONS

Voltage : 110V~240V/50-60Hz
Power : 600W
Control Mode : Wireless/DMX
Spray Distance : 3 Meters
Weight : 5 Kg.

3
HEAD

DMX
512



S-202

SPECIFICATIONS

Voltage : 110V~240V/50-60Hz
Power : 400W
Control Mode : DMX
Spray Distance : 3 Meters
Weight : 4 Kg.

2
HEAD

DMX
512



PYRO CONTROLLER



S-220

SPECIFICATIONS

Power supply : AC220V/110V, 50/60 Hz
Channels : 4 Channels
Size : 20.5*19*13.5 Cm
(Unit) 22*18*19 Cm(controller)
Weight : 3.2 Kg/(Unit), 1.7 Kg/(controller)
Fitting : DMX controller, control cable



S-221

SPECIFICATIONS

Power supply : 12V (8 pcs of 1.5V battery)
Power : 12W
Channels : 6 Channels
Control mode : Wireless control
Fitting : Wireless controller
Size : 23*23*25 Cm
Weight : 2.8 Kg



S-222

SPECIFICATIONS

Power supply : 12V (8 pcs of 1.5V battery)
Power : 50W
Channels : 6 Channels
Control mode : Wireless control
Fitting : Wireless controller
Weight : 4 Kg



PYRO CONTROLLER



S-223

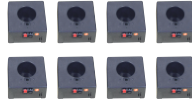
SPECIFICATIONS

Voltage : 110V~240V/50-60Hz
Power : 200W
Control Mode : Wireless/DMX
Spray Distance : 3 Meters
Weight : 3 Kg.



CORD
LESS

**8 WAY
CONTROLLER**



S-224

SPECIFICATIONS

1. Waterproof black case, protect the firing system very well.
2. With sequential(rapid), salvo and step fire function. You could adjust the sequential (rapid) time by the time table. Time range is 0.1-9.9S.
3. With low battery indicator. The LED will light when it is need to charging.
4. With LONG DISTANCE remote. Remote range is 400-500M
5. With "INPUT" and "OUTPUT" clips. Several machine could connect together.
6. Each channel with a "TEST" LED.
7. 12V battery, could fire talon(consumer) igniters



CORD
LESS

S-225

SPECIFICATIONS

Power supply : AC220V/110V, 50/60Hz
Power : 25 W (1 shot), 50 W (4 shots)
Control Mode : Dmx512
Size : 15*20*21 Cm (1 shot),
20*26.5*26.5 Cm (4 shots)
Weight : 3.6 Kg (1 shot), 9 Kg (4 shots)

4
HEAD

DMX
512



LASER EFFECTS



S-013

SPECIFICATIONS

Voltage	: 110V~240V/50-60Hz
Laser Power	: 5W RGB
Mode	: Sound/Auto/DMX/ILDA
Effect	: Abundant Built in Program
Scanner	: 40 KPPS High Speed Optical Scanner
Certification	: CE, ROHS, FCC.



S-012

SPECIFICATIONS

Voltage	: 110V~240V/50-60Hz
Laser Power	: 1/2/3W Green
Mode	: Sound/Auto/DMX/ILDA
Effect	: Abundant Built in Program
Scanner	: 40 KPPS High Speed Optical Scanner
Certification	: CE, ROHS, FCC.



S-011

SPECIFICATIONS

Voltage	: 110V~240V/50-60Hz
Laser Power	: 1W RGB
Mode	: Sound/Auto/DMX/ILDA
Effect	: Abundant Built in Program
Scanner	: 40 KPPS High Speed Optical Scanner
Certification	: CE, ROHS, FCC.



LASER EFFECTS



S-01/21

SPECIFICATIONS

Voltage : 110V~240V/50-60Hz
Laser Power : 100MW Green/
400MW Blue
Mode : Sound/Auto/DMX
Effect : Abundant Built in
Program
Scanner : Motor
Certification : CE, ROHS, FCC.



S-02

SPECIFICATIONS

Voltage : 110V~240V/50-60Hz
Laser Power : 40MW Green
Mode : Sound/Auto/DMX
Effect : Abundant Built in
Program
Scanner : Motor
Certification : CE, ROHS, FCC.



S-03

SPECIFICATIONS

Voltage : 110V~240V/50-60Hz
Laser Power : 100MW Green/
150MW Red
Mode : Sound/Auto/DMX
Effect : Abundant Built in
Program
Scanner : Motor
Certification : CE, ROHS, FCC.



LASER EFFECTS



S-05

SPECIFICATIONS

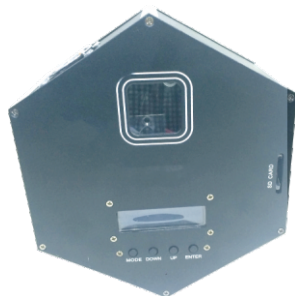
Voltage	: 110V~240V/50-60Hz
Laser Power	: 100MW Green 150MW Red
Mode	: Sound/Auto/DMX
Effect	: Abundant Built in Program
Scanner	: Motor
Certification	: CE, ROHS, FCC.



S-024

SPECIFICATIONS

Voltage	: 110V~240V/50-60Hz
Laser Power	: 500MW RGB
Mode	: Sound/Auto/DMX
Effect	: Abundant Built in Program
Scanner	: 20 KPPS Scanner
Certification	: CE, ROHS, FCC.



S-015

SPECIFICATIONS

Voltage	: 110V~240V/50-60Hz
Laser Power	: 500MW Green
Mode	: Sound/Auto/DMX/ILDA
Effect	: Abundant Built in Program
Scanner	: 25 KPPS Scanner
Certification	: CE, ROHS, FCC.



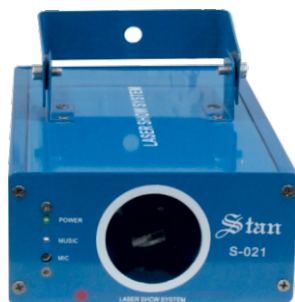
LASER EFFECTS



S-021B

SPECIFICATIONS

Voltage	: 110V~240V/50-60Hz
Laser Power	: 500MW Blue
Mode	: Sound/Auto/DMX
Effect	: Abundant Built in Program
Scanner	: Motor
Certification	: CE, ROHS, FCC.



S-023

SPECIFICATIONS

Voltage	: 110V~240V/50-60Hz
Laser Power	: 100MW Green/ 150MW Red
Mode	: Sound/Auto/DMX
Effect	: Abundant Built in Program
Scanner	: Motor
Certification	: CE, ROHS, FCC.



S-026/27

SPECIFICATIONS

Voltage	: 110V~240V/50-60Hz
Laser Power	: 2x250MW Green/ 2x400MW Blue
Mode	: Sound/Auto/DMX
Effect	: Abundant Built in Program
Scanner	: Motor
Certification	: CE, ROHS, FCC.



LASER EFFECTS



S-102

SPECIFICATIONS

Voltage	: 110V~240V/50-60Hz
Laser Power	: Red & Blue : 200MW / G : 60MW
Laser Mode	: Red, Green, Blue
Control Mode	: DMX-512, Sound, Auto, Master/Slave
Laser Effect	: R,G,B, Colour fat beam, (2*4) in tota 8 beams mix working
Scanning Angle	: 230°
Effect	: with Super Beam Laser, makes the light have super dynamic.



S-101

SPECIFICATIONS

Voltage	: AC110V~240V/50-60Hz
Power Consumption	: 30W
Laser Power	: G:100MW, R:200MW, B:200MW
Laser Source	: Solid semiconductor Laser Generator
Wave Length	: G:532nm, R:650nm, B:447nm
Laser Modulation	: 0~20k TTL modulation
Laser Colour	: Colourful
Scan System	: 20kpps vibratory mirror system
Control Mode	: Sound, Auto, keyboard, remote control
Cool System	: Fan
Operating Environment	: 10~35? Indoor
Light Size	: 245x225x125
Gross Weight	: 2.0kg.



CONTROLLER



PEARL 2012

SPECIFICATIONS

1. 1990, 2048 DMX Channels Control up to 40 channels & 240 Computer Lights.
2. 450 programs can be store.
3. More than 3000 kind of Library Files.
4. 15 playback Faders can control 450 memory, running light or cue List.
5. Standard configuration including VGA output.
6. Theater mode and playback function.
7. Graphic builder, you can quickly generate graphics and effects.



TIGER TOUCH

SPECIFICATIONS

1. 10 pageable playbacks, 60 pages.
2. 10 static playbacks – perfect for instant access.
3. 100% brighter 15.6" screen
4. Three metal shaft optical encoders offering luxurious precision
5. MIDI support for MIDI Notes and MIDI Timecode.
6. 4 physical DMX outputs, up to 16 over ArtNet or sACN - 8192 channels.
7. Supports Titan Network Processors for DMX expansion up to 64 universes.
8. Expand your control surface through wings, DMX In or MIDI
9. Support for external touch screen
10. 10 programmable executor buttons
11. Conveniently accessible front loading USB

CONTROLLER



PEARL 2048



SPECIFICATIONS

- ◆ Soft distribution of channel. ◆ Site can copy channels list.
- ◆ 450 programs can be stored. ◆ Audio input connector: + XLR-D3Fx2.
- ◆ Adjustable knob has a different time. ◆ USB memory, can effectively save the field data.
- ◆ DMX512/1990 standard, 2048 DMX control channels.
- ◆ Four independent driving signals of opto-isolated output port. 40-channel can be controlled up to 240 computer light dimming and 240 road.



PEARL 1024

SPECIFICATIONS

Intelligent Fixtures Controller, with microcomputer as core, in adoption of new technology, has more powerful and more humanized functions. Standard, photoelectric isolation signal output. Use Library Setup Mode Input control mode of command line makes operation more convenient. Shape effect is convenient for users to control these many effects to intelligent fixture as circle, shape like 8 and rainbow etc. Parameters (speed, size, spread offset and direction) can be set independently and also outputted in superimposed mode. VGA interface is provided to connect up color CRT or LCD; detailed and visualized human-computer interface is easier to control.

CONTROLLER



BLACK HORSE

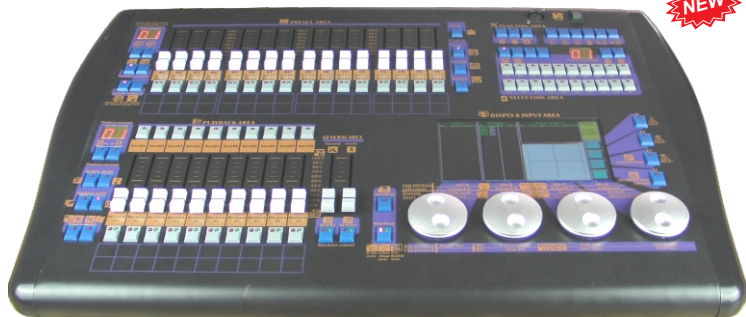


SPECIFICATIONS

- Interface : 4 USB connector (A type), 1 spare USB input port (B type), 1 Audio input interface, 1 LTC input interface, 6 DMX-512 output interface, 1 DMX-512 input connector, 2 working lamp Interface, 1 gigabit network interface, 1 MIDI input interface. i7 Processor

- Individually backlit and dimable sileney keys
- Integrated universal power supply
- Built-in-UPS uninterruptable power supply, zero delayed automatic swing, under voltage-over voltage protection
- Industrial integration 1037U motherboard
- Multi screen touch control display card
- ROM 60GB solid state disk , RAM 4 GB DDR3 1600

DRAWING CONTROLLER



SPECIFICATIONS

- Total 1024 channels
- Pallette RGB & CMY colour mixing
- Shape : 140 editable shapes and 60 built in shapes
- RS232 interface connects smart equipments for sync control
- The light shows the effect according to shape you have drawn
- No need lighting librray file, manual patch and default patch address
- Running mode : auto loop, player synchronization, manual trigger, music trigger
- Using player make audio-video synchronized light show, support more formats for playback

CONTROLLER



COMMAND WING

SPECIFICATIONS



- ◆ Realtime control for 2,048 parameters in combination with command wing on PC.
 - ◆ 18 fader executor buttons
 - ◆ 6 fader executors (60mm)
 - 6 button executors
- ◆ 6 page buttons (Channel/Fader/Button)
 - 4 encoders
- ◆ 2 A/B faders (100mm); main executor
 - ◆ Level-wheel – dimmer
- ◆ Grand Master fader (60mm)
 - ◆ Blackout button
- ◆ Main executor area (GO+/GO-/PAUSE)
 - ◆ PSU built in; 90 – 230V (50 – 60Hz)

Connectivity

- ◆ 2 DMX out & 1 DMX in (XLR 5pin)
- ◆ Midi in/out (Midi-Timecode/Midi-Note)
 - ◆ Timecode (XLR 3pin)
 - ◆ Analogue remote input
 - ◆ USB 2.0 port
- ◆ Slot for Kensington Lock

FADER WING

SPECIFICATIONS

- ◆ Real-time control for 2,048 parameters in combination with fader wing on PC.
- ◆ Expandable up to 4,096 parameters
- ◆ 4 DMX out (XLR 5pin)
- ◆ 15 fader executors, 45 fader executor buttons, 15 button executors
- ◆ Individually backlit and dimmable silent (clickless) keys
- ◆ USB port for external desk lamp
- ◆ Integrated universal power supply (90-240V, 50-60Hz)
- ◆ Light (just 4.5kg), handy & rock solid
- ◆ Ergonomic design
- ◆ Just connect via USB to any PC running command wing on PC.



CONTROLLER



DMX-256

SPECIFICATIONS

- Simple, first-time users can easily control
- DMX512 international digital signal output control circuit Road 192.
- Can control 16 channels of computer lights 32 Desk.
- Can store 16 programs, each program can be compiled scene 80 the number of different
- Procedures for the conversion program simply click on the button you can quickly achieve.
- Directly by the control panel EDIT key table into Office programming state of adjustment.



CHROCODILE 2024

SPECIFICATIONS

- LCD display with backlight up to 20 scanners may be connected with maximum of 24 channels each 24 dimmer channels
- 8 slider for manual control of channels
- Assignable joysticks for ease of movement
- 24 chases run in circularly, max 40 steps each chase
- Can run 8 chases simultaneously
- 960 chase step
- Range of cross time : 0s - 25.5s
- Each chase speed and cross time can be saved automatic

CONTROLLER



PILOT 2000 Ver. 2



- Universal DMX-512 controller able to control upto 40 units.
- Each unit with maximum of 36 channels. Total of 512 DMX channels.
- Able to control dimmer pack with maximum of 192 channels
- 40 programs or chases, m chases, presets each program chase
- Able to use 4 programs.4 chases, 4m chases, 4 presets at same time
- Internal unit library , able to create new unit library in controller



PILOT 2000

- Universal DMX-512 controller able to control upto 40 units.
- Each unit with maximum of 36 channels. Total of 512 DMX channels.
- Able to control dimmer pack with maximum of 192 channels
- 40 programs or chases, m chases, presets each program chase
- Able to use 4 programs.4 chases, 4m chases, 4 presets at same time
- Internal unit library , able to create new unit library in controller



DMX-384

- Total of 384 output channels, 30 banks of 8 programable scenes.
- 16 slider for manual control of channels, midi control over banks, chase/blackout
- Record upto 6 programable chases with fade time and speeds.
- LED function and program display Auto/program mode control by fade time sliders.

CONTROLLER



DMX-200

- DMX-512/1990 standard, 192 DMX Channels.
- Large Digital LCD display with back-lighted.
- Control up to 16 intelligent lights (12 DMX Channels per fixture).
- Operation via Manual or Chase Step.
- 16 Intelligent Fixture chase steps within 100 scenes for each. Have the black out function ,sound run function.



DMX-512

- TDMX-512/1990 standard, 192 DMX Channels.
- Large Digital LCD display with back-lighted.
- Control up to 16 intelligent lights (12 DMX Channels per fixture).
- Operation via Manual or Chase Step.
- 16 Intelligent Fixture chase steps within 100 scenes for each. have the black out function ,sound run function.

DMX-SPLITTER

- 1-8 DMX signal splitter
- DMX signal isolated electrically
- Compatible to both 3&5 pin XLR
- LED indicators display



CONTROLLER



DMX-240 USB

USB

NEW

- 240 channels control upto 15 sets of 16 channels.
- 12 field program the number of 23 step program maximum number of steps.
- Total number of steps for the 276-step procedure , 24 dimmer channels.
- Step scene pause the scene fades speed from 0.1 to 25.4 seconds
- 128 high- capacity memory card.

NEW



DMX-500

- TDMX-512/1990 standard, 192 DMX Channels.
- Large Digital LCD display with back-lighted.
- Control up to 16 intelligent lights (12 DMX Channels per fixture).
- Operation via Manual or Chase Step.
- 16 Intelligent Fixture chase steps within 100 scenes for each. have the black out function ,sound run function.

NEW

DMX-SPLITTER

- 1-6 DMX signal splitter
- DMX signal isolated electrically
- Compatible to both 3&5 pin XLR
- LED indicators display



POWER DISTRIBUTOR



24 CH. POWER RACK

SPECIFICATIONS

- Power input - 5P 200A 380V
- 24X3PIN, 16A output
- 2XMulti Socket Output
- Delixi Breaker
- Voltage Amp. Meter
- Weight 60 Kg.



12 CH. POWER RACK

SPECIFICATIONS

- Power input - 5P 32A 380V
- 12X3PIN, 16A output
- 1X5PIN 63A Input
- Delixi Breaker
- Voltage Amp. Meter
- Weight 40 Kg.



WATER PROOF POWER RACK

SPECIFICATIONS

- Power input - 5P 32A 380V
- 12X3PIN, 16A output
- 1X5PIN 63A Input
- Delixi Breaker
- Ip67 Cover to protect the Breaker
- Voltage Amp. Meter
- Weight 20 Kg.



POWER DISTRIBUTOR



POWER STRIP



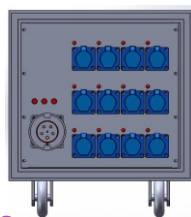
XLR



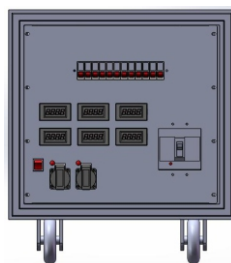
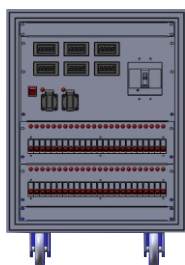
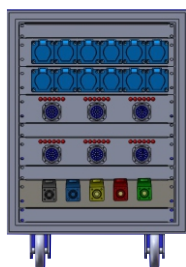
XLR CABLES



CABLE TESTER



POWER RACKS



FOLLOW SPOT



FOLLOW-17R / 10R

SPECIFICATIONS

- Voltage : 110V~240V/50-60Hz
Power : 600 W
Color : White, Yellow, Green,
Blue.
Features : Focus, Strobe, Zoom.
Application : Ideal for wedding,
Medium and Large Stage
performance, Fashion
shows, etc.
Net Weight : 20 Kg.



FOLLOW-7R

SPECIFICATIONS

- Voltage : 110V~240V/50-60Hz
Power : 450 W
Color : White, Yellow, Green,
Blue.
Features : Focus, Strobe, Zoom.
Application : Ideal for wedding,
Medium and Large Stage
performance, Fashion
shows, etc.
Net Weight : 15 Kg.

HEAVY DUTY STAND



ST-230

SPECIFICATIONS

Height	: 2.1M- 6M
Cross Bar Width	: 2.0M - 8pcs. light hole
Weight	: 120kg.
N. W.	: 40kg
G. W.	: 45kg.



ST-231

SPECIFICATIONS

Height	: 1.7M- 4.3M
Cross Bar Width	: 2.0M - 8pcs. light hole
Weight	: 60kg.
Packing	: 204*20*26 (1 Set)
N. W.	: 21kg
G. W.	: 22kg.



TRUSS

ALUMINUM



500X600MM

Material	: 6061/6082-T6
Main Tube	: 50x3mm
Vice Tube	: 30x2mm
Brace	: 20x2mm



350X350MM

SPECIFICATIONS

Material	: 6061/6082-T6
Main Tube	: 50x3mm
Vice Tube	: 30x2mm
Brace	: 20x2mm



CORNER BLOCK

SPECIFICATIONS

Material	: 6061/6082-T6
Main Tube	: 50x3mm
Vice Tube	: 30x2mm
Brace	: 20x2mm



BASE PLATE



FOCUS LIGHT

PROFILE/BLINDER/STROBE



S-204

SPECIFICATIONS

Voltage	: 110V~240V/50-60Hz
Power	: 1000W
Angle	: 18°/ 26°
Lamp	: 750W
Application	: Use in Studios, Theatre Fashion shows, etc.
Net Weight	: 4 Kg.



S-205

SPECIFICATIONS

Voltage	: 110V~240V/50-60Hz
Power	: 1000W
Angle	: Adjustable
Lamp	: 4x750W
Application	: Use in Studios, Theatre Fashion shows, etc.
Net Weight	: 4 Kg.



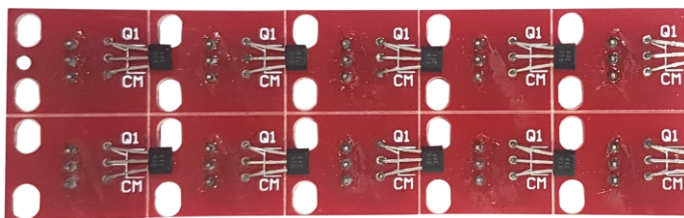
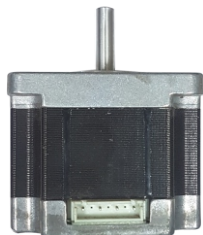
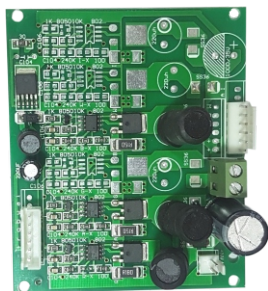
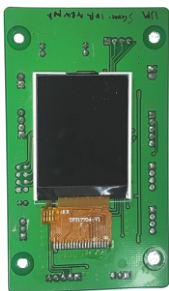
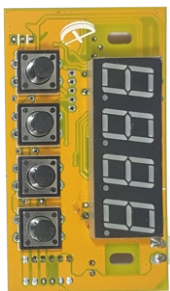
S-060

SPECIFICATIONS

Voltage	: 110V~240V/50-60Hz
Power	: 1500W
Lamp	: 1500W Xenon Tube
Application	: Use in Studios, Theatre Fashion shows, etc.
Net Weight	: 2 Kg.



SPARE PARTS



NOTE PAD



A series of horizontal dotted lines spanning the width of the page, providing a guide for writing. There are 20 such lines, evenly spaced from the top of the page down to just above the footer.



Stan[®]
Professional Stage Lighting